



## Unilateral Hearing Loss due to Cerebello-Pontine Angle Lesion

Henrique Furlan Pauna<sup>1,2\*</sup> and Eloy Simões Júnior<sup>2</sup>

<sup>1</sup>Department of Otorhinolaryngology, Head and Neck Surgery, University of Campinas (UNICAMP), Campinas, São Paulo, Brazil

<sup>2</sup>Clínica Eloy Simões Jr, Piracicaba, São Paulo, Brazil

### Clinical Image

This is a 52 years-old male patient that presented at the clinic complaining of a hearing loss at his left side since the past 2 years. He denied tinnitus, dizziness, earache, otorrhea or trauma. He used to work in agricultural production and had controlled hypertension. He denied any family history of hearing loss. Physical examination did not present any changes. An audiometry was requested and a sensorineural hearing loss in the left ear was observed (Figure 1), and a MRI was performed. A contrast enhanced (T1 weighted (A)) and heterogeneously hyperintense (T2 weighted (B)) lesion was observed within the internal auditory canal on the left side (Figure 2 - arrow), characteristically compatible with acoustic neuroma. After discussion, the patient decided for observation instead surgery.

### OPEN ACCESS

#### \*Correspondence:

Henrique Furlan Pauna, Department of Otorhinolaryngology, Head and Neck Surgery, University of Campinas (UNICAMP), Campinas, São Paulo, Brazil,

E-mail: [h\\_pauna@hotmail.com](mailto:h_pauna@hotmail.com)

Received Date: 17 Aug 2017

Accepted Date: 30 Oct 2017

Published Date: 02 Nov 2017

#### Citation:

Pauna HF, Júnior ES. Unilateral Hearing Loss due to Cerebello-Pontine Angle Lesion. *Ann Clin Otolaryngol.* 2017; 2(4): 1023.

Copyright © 2017 Henrique Furlan Pauna. This is an open access article distributed under the Creative Commons Attribution License, which permits unrestricted use, distribution, and reproduction in any medium, provided the original work is properly cited.

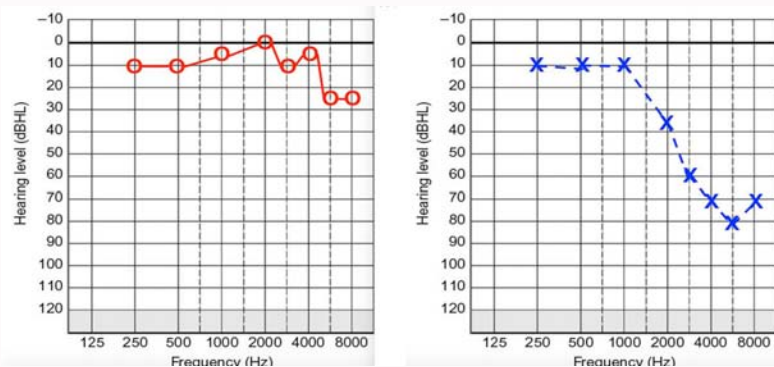


Figure 1: Audiometry of left ear.

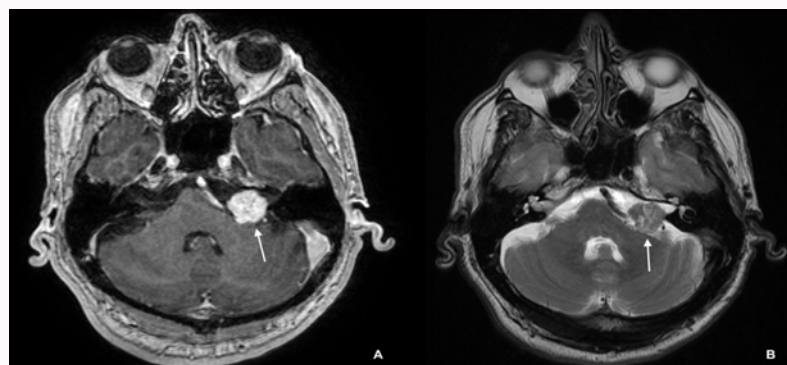


Figure 2: MRI of the internal auditory canal.