



Feasibility for Repair of Acquired Mitral Leaflet Defects in First Time and Redo Operations through a Right Minithoracotomy

Sana Rahman and Atiq Rehman*

Tran Catheter Valve Therapy, Lourdes Medical Center, USA

Clinical Image

CardioCel (Admedus, Malaga, Australia) patch has been used to repair cardiac defects [1]. We present three cases where we successfully repaired acquired mitral leaflets in first time and redo operations. All cases performed through 5 cm right minithoracotomy using CardioCel.

Patient #1 (Figure 1A and 1B) had AVR2 months ago and persistent dyspnea. TEE revealed new 2 cm × 2 cm defect in A1 scallop with severe mitral regurgitation (MR). CardioCel patch repair of defect performed without annuloplasty ring because of mitral annular calcification.

Patient #2 (Figure 2A and 2B) had history of embolic stroke and methicillin resistant



Figure 1A: A1 Scallop tear post aortic valve replacement.

OPEN ACCESS

*Correspondence:

Atiq Rehman, Trans Catheter Valve Therapy, Lourdes Medical Center, 1600 Haddon Ave, Camden, NJ 08103, USA, Tel: 609-304-8397; Fax: 856-668-8815; E-mail: atiqmd@aol.com

Received Date: 15 Jul 2017

Accepted Date: 02 Aug 2017

Published Date: 12 Aug 2017

Citation:

Rahman S, Rehman A. Endoballoon Occlusion Catheter Insertion through the Left Subclavian Artery. *J Surg Tech Proced.* 2017; 1(2): 1006.

Copyright © 2017 Atiq Rehman. This is an open access article distributed under the Creative Commons Attribution License, which permits unrestricted use, distribution, and reproduction in any medium, provided the original work is properly cited.

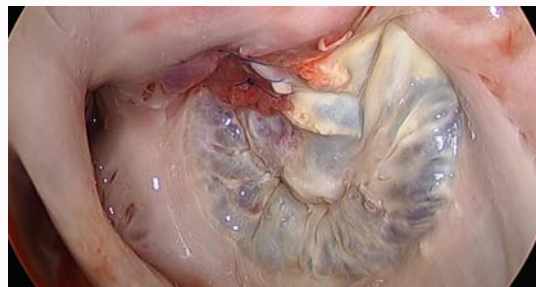


Figure 1B: Defect repaired with CardioCel patch without annuloplasty ring due to MAC.

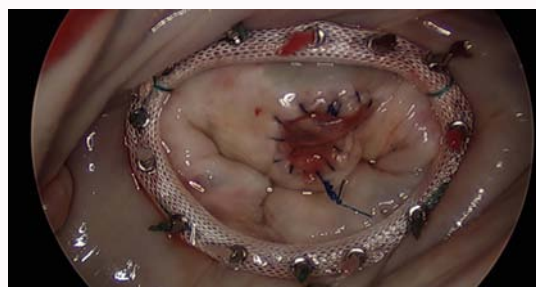


Figure 2A: A2 Scallop defect post endocarditis.



Figure 2B: Defect repaired with CardioCel patch and Physio annuloplasty ring.



Figure 3B: CardioCel patch repair of defect and Cosgrove annuloplasty band.

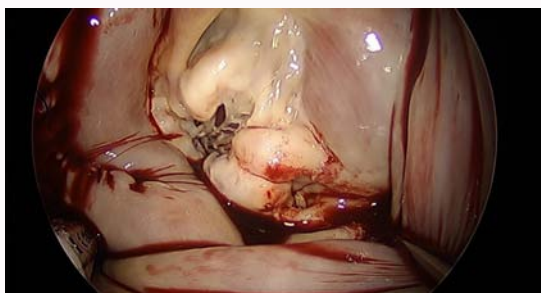


Figure 3A: Degenerative defect in P3 scallop.

staphylococcus aureus endocarditis with progressive dyspnea on exertion. Tran Esophageal Echocardiography (TEE) revealed severe MR with 2 cm × 1.8 cm defect in A2 scallop. Defect repaired with CardioCel patch and Physio (Edwards Life Sciences, Irvine, US) 32 mm ring.

Patient #3 (Figure 3A and 3B) was asymptomatic octogenarian with incidental murmur. 3-D TEE demonstrated 2 cm × 1.5 cm defect in P3 scallop of mitral valve and severe MR. Defect was repaired with patch and Cosgrove (Edwards Life Sciences, Irvine, US) 36 mm ring.

References

1. Strange G, Brizard C, Karl TR, Neethling L. An evaluation of Admedus' tissue engineering process-treated (ADAPT) bovine pericardium patch (CardioCel) for the repair of cardiac and vascular defects. *Expert Rev Med Devices*. 2015;12(2):135-41.