



A 62-Year-Old Male Presented with Anemia and Leukocytosis

Xiao R* and Wolgast LR

Department of Pathology, Montefiore Medical Center /Albert Einstein College of Medicine, USA

Keywords

Anemia; Leukocytosis; Plasma cell

Introduction

A 62-year-old male patient presented to the emergency department with severe anemia and marked leukocytosis. On peripheral blood smear, we saw a cell population with scant basophilic cytoplasm and round nuclei (Figure 1). This population comprised 60% of the white blood cells. Flow cytometry of the blood demonstrated a cell population with CD138+, CD38+, CD19-, CD56- and expressing lambda light chain. The patient was diagnosed as plasma cell leukaemia. Bone marrow biopsy was performed. The core biopsy of the bone marrow showed markedly hypercellular. Malignant infiltrates replaced the normal trilineage hematopoietic elements in the marrow. There was no aspiration obtained because of fibrosis in the marrow. Touch prep was prepared from the core biopsy. Touch prep showed the same population of malignant plasma cells (Figure 2).

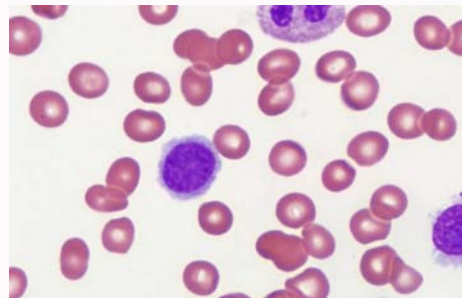


Figure 1:

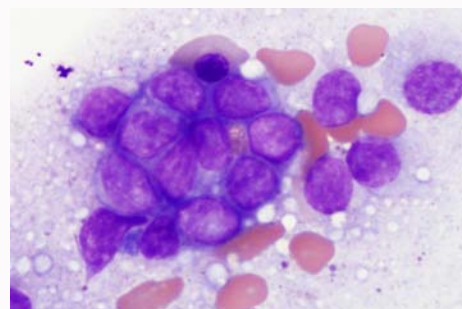


Figure 2:

OPEN ACCESS

*Correspondence:

Xiao R, Department of Pathology,
Montefiore Medical Center /Albert
Einstein College of Medicine, Bronx,
New York, USA,

E-mail: rxiao@montefiore.org

Received Date: 20 Sep 2025

Accepted Date: 04 Oct 2025

Published Date: 08 Oct 2025

Citation:

Xiao R, Wolgast LR. A 62-Year-Old
Male Presented with Anemia and
Leukocytosis. *J Hematol Mult Myeloma*.
2025; 7(1): 1030.

Copyright © 2025 Xiao R. This is an
open access article distributed under
the Creative Commons Attribution
License, which permits unrestricted
use, distribution, and reproduction in
any medium, provided the original work
is properly cited.