



Painless Jaundice – Common Presentation of an Uncommon Disease

Yutaka Tomizawa¹ and Andres Gelrud^{2*}

¹Department of Gastroenterology, Hepatology and Nutrition, University of Chicago, USA

²Department of Medicine, University of Chicago Medicine and Biological Sciences, USA

Clinical Image

A 50 year-old man presented with icteric sclera, pruritus and choloria. He denied fever, abdominal pain, or weight loss. No palpable abdominal masses was appreciated on physical examination. Laboratory tests were pertinent for Alb 3.4 g/dL, T-Bil 5.3 mg/dL, ALT 298 U/L, AST 161 U/L, ALP 432 U/L. MRCP demonstrated marked dilatation of common bile duct (CBD) but no filling defects were appreciated, and pancreatic duct appeared normal (Figure A). ERCP revealed the distal CBD emptied into the pancreatic duct at approximately 17mm from the major papilla, forming a common channel, which is diagnostic of anomalous pancreaticobiliary junction (ABPJ). A cystic dilation is present both in the CBD and common hepatic duct (Figure B). In conjunction with ABPJ, the biliary cystic dilation is consistent with the diagnosis of choledochal cyst type Ic. This case highlights that anomalous pancreaticobiliary junction should be considered when there is a common pancreaticobiliary channel and surveillance of biliary cancer should be considered in appropriate clinical setting.

OPEN ACCESS

*Correspondence:

Andres Gelrud, Center for Endoscopic Research and Therapeutics (CERT), Department of Medicine, The University of Chicago Medicine and Biological Sciences, Chicago, USA. 5758 S. Maryland Ave. MC 9028, Chicago, IL 60637, Tel: 773-702-5997; Fax: 773-834-8891;

E-mail: agelrud@bsd.uchicago.edu

Received Date: 09 Feb 2017

Accepted Date: 11 Feb 2017

Published Date: 13 Feb 2017

Citation:

Tomizawa Y, Gelrud A. Painless Jaundice – Common Presentation of an Uncommon Disease. *J Gastroenterol Hepatol Endosc.* 2017; 2(1): 1007.

Copyright © 2017 Gelrud A. This is an open access article distributed under the Creative Commons Attribution License, which permits unrestricted use, distribution, and reproduction in any medium, provided the original work is properly cited.

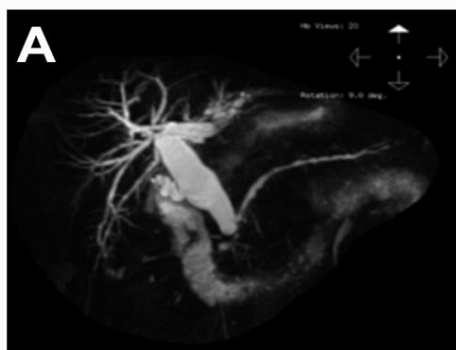


Figure A: MRCP demonstrated marked dilatation of common bile duct (CBD) but no filling defects were appreciated, and pancreatic duct appeared normal.



Figure B: A cystic dilation is present both in the CBD and common hepatic duct.